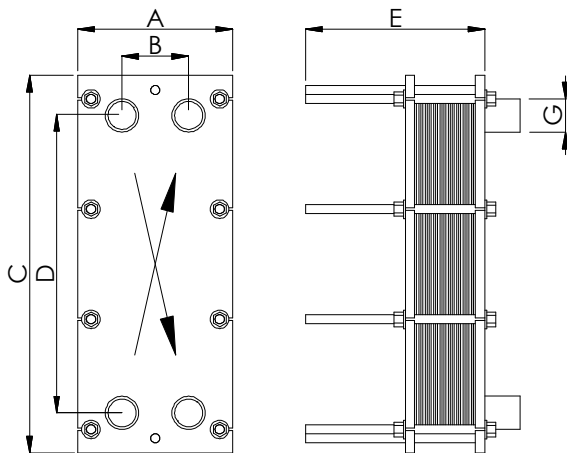


APPLICATIONS	Heating, Cooling, Steam applications
MAX. FLOW RATE	15 m ³ /h (with water)
FRAME	PN16, PN25

TS501

MATERIALS	FRAME	Painted carbon steel P355NH (EN 10028/3a) Painted carbon steel ASTM A516 Gr.70 Stainless steel AISI 304L Stainless steel AISI 316L	PLATES	Stainless steel AISI 316L Titanium Alloy SMO 254
	GASKETS	NBR EPDM FKM	CLAMPING BOLTS	Galvanized steel ASTM A193 B7 Stainless steel ASTM A193 B8 Stainless steel ASTM A193 B8M

DIMENSIONS



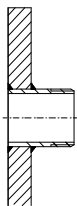
Are available the sport legs too

NOMINAL PRESSURE	PN16	PN25
A (mm)	200	
B (mm)	86	
C (mm)	490	
D (mm)	385	
G (mm)	DN32 (11/4")	
Plate surface (m ²)	0,05	
Vol. of channel (l)	0,085	
Weight of plate (Kg)	0,4	
Plate thickness (mm)	0,5	
Weight of frame (Kg)	27	35
Clamping bolts	N°8 M16	N°8 M16
E (mm)	90 (max 15 plates)	
	115 (max 21 plates)	
	140 (max 27 plates)	
	190 (max 39 plates)	
	240 (max 51 plates)	
	290 (max 63 plates)	

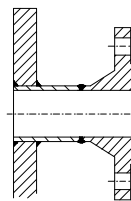
Note: the above quantities can be considered an expanability of 20% for each length. The max quantity of plates for this exchanger is 75

The plate heat exchangers are made according to the PED 2014/68/UE

CONNECTION TYPE



Threaded stainless steel (welded) G1 1/4"



Flange DN32 (Carbon steel)

Also available ANSI