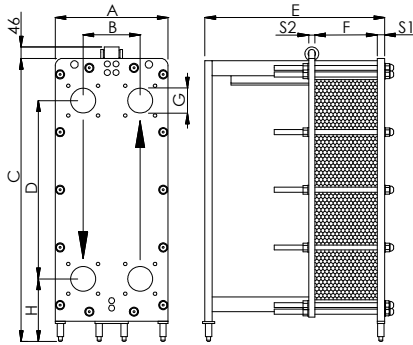


<b>APPLICATIONS</b>	Food, pharmaceutical and chemical sectors
<b>MAX. FLOW RATE</b>	150 m <sup>3</sup> /h (with water)
<b>FRAME</b>	PN6, PN10 (on request also PN16)

# TSC2411

<b>MATERIALS</b>	<b>FRAME</b>	Stainless steel AISI 304L Stainless steel AISI 316L	<b>PLATES</b>	Stainless steel AISI 304 Stainless steel AISI 316L Titanium Alloy SMO 254
	<b>GASKETS</b>	NBR EPDM FKM		<b>CLAMPING BOLTS</b>

## DIMENSIONS

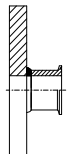


NOMINAL PRESSURE	PN6	PN10
A (mm)	454	465
B (mm)	230	
C (mm)	1146	
D (mm)	720	
H (mm)	255	
G (mm)	DN100 (4")	
Plate surface (m <sup>2</sup> )	0,224	
Vol. of channel (l)	0,583	
Weight of plate (Kg)	1,35	
Plate thickness (mm)	0,5	
Weight of frame (Kg)	260	350
Clamping bolts	N°10 M20 + N°4 M20	N°10 M24 + N°4 M20
E (mm)	735 (max 105 plates) 985 (max 151 plates) 1235 (max 197 plates) 1485 (max 243 plates) 1735 (max 289 plates) 1985 (max 337 plates)	

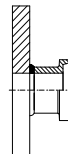
The plate heat exchangers are made according to the **PED 2014/68/UE**

**Note:** the above quantities can be considered an expanability of 20% for each length. The max quantity of plates for this exchanger is **403**

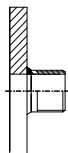
## CONNECTION TYPE



Clamp Stainless steel DN100



DIN 11851 Stainless steel DN100



Threaded Stainless steel G4"



Flange predisposition DN100

Also available **ANSI**