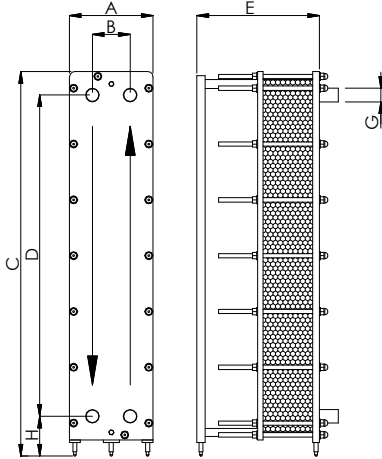


<b>APPLICATIONS</b>	Food, pharmaceutical and chemical sectors
<b>MAX. FLOW RATE</b>	With water 40 m <sup>3</sup> /h (DN50) and 50 m <sup>3</sup> /h (DN65)
<b>FRAME</b>	PN6, PN10 (on request also PN16)

# TSC2611

<b>MATERIALS</b>	<b>FRAME</b>	Stainless steel AISI 304L Stainless steel AISI 316L	<b>PLATES</b>	Stainless steel AISI 304 Stainless steel AISI 316L Titanium Alloy SMO 254
	<b>GASKETS</b>	NBR EPDM FKM		<b>CLAMPING BOLTS</b>

## DIMENSIONS

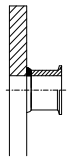


NOMINAL PRESSURE	PN6	PN10
A (mm)	310	317
B (mm)		140
C (mm)		1438
D (mm)		1200
H (mm)		150
G (mm)		DN50 (2") DN65 (2 1/2")
Plate surface (m <sup>2</sup> )		0,304
Vol. of channel (l)		0,63
Weight of plate (Kg)		1,4
Plate thickness (mm)		0,5
Weight of frame (Kg)	170	210
Clamping bolts	N°16 M16	N°16 M20
E (mm)	455 (max 73 plates) 675 (max 117 plates) 815 (max 145 plates) 965 (max 175 plates)	

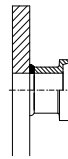
**Note:** the above quantities can be considered an expanability of 20% for each length. The max quantity of plates for this exchanger is **209**

The plate heat exchangers are made according to the **PED 2014/68/UE**

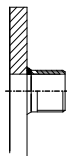
## CONNECTION TYPE



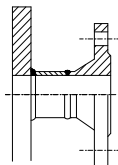
- Clamp Stainless steel DN50
- Clamp Stainless steel DN65



- DIN 11851 Stainless steel DN50
- DIN 11851 Stainless steel DN65



- Threaded Stainless steel G2"
- Threaded Stainless steel G2 1/2"



- Flange DN50
- Flange DN65

Disponibile anche ANSI