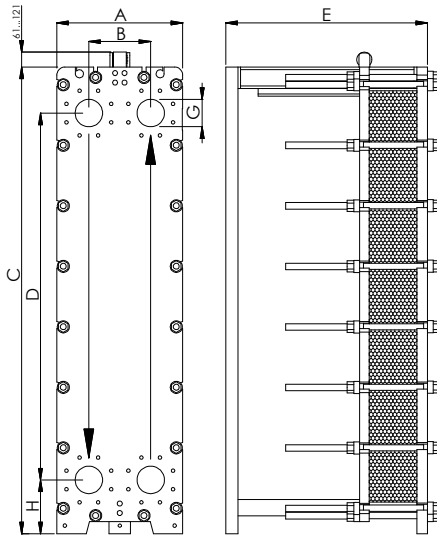


APPLICATIONS	Heating, Cooling, Steam applications
MAX. FLOW RATE	150 m ³ /h (with water)
FRAME	PN10, PN16 (on request also PN25)

TSC4810

MATERIALS	FRAME	Painted carbon steel P355NH (EN 10028/3a) Painted carbon steel ASTM A516 Gr.70 Stainless steel AISI 304L Stainless steel AISI 316L	PLATES	Stainless steel AISI 304 Stainless steel AISI 316L Titanium Alloy SMO 254
	GASKETS	NBR EPDM FKM	CLAMPING BOLTS	Galvanized steel ASTM A193 B7 Stainless steel ASTM A193 B8 Stainless steel ASTM A193 B8M

DIMENSIONS

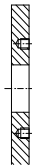


NOMINAL PRESSURE	PN10	PN16
A (mm)	455	468
B (mm)		230
C (mm)		1735
D (mm)		1364
H (mm)		200
G (mm)		DN100 (4")
Plate surface (m ²)		0,4871
Vol. of channel (l)		1,11
Weight of plate (Kg)		2,4
Plate thickness (mm)		0,5 (0,6)
Weight of frame (Kg)	475	565
Clamping bolts	N°16 M20 + N°4 M20	N°16 M24 + N°4 M20
E (mm)	750 (max 105 plates) 1000 (max 151 plates) 1250 (max 197 plates) 1500 (max 243 plates) 1750 (max 289 plates) 2000 (max 337 plates)	

Note: the above quantities can be considered an expanability of 20% for each length. The max quantity of plates for this exchanger is **403**

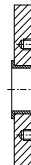
The plate heat exchangers are made according to the **PED 2014/68/UE**

CONNECTION TYPE



Flange predisposition DN100

Also available **ANSI**



Flange predisposition DN100 with coating rubber
 Flange predisposition DN100 with coating stainless steel

Also available **ANSI**

