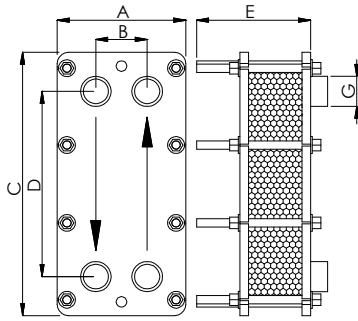


<b>APPLICATIONS</b>	Heating, Cooling, Steam applications
<b>MAX. FLOW RATE</b>	15 m <sup>3</sup> /h (with water)
<b>FRAME</b>	PN10, PN16

# TSC510

<b>MATERIALS</b>	<b>FRAME</b>	Painted carbon steel P355NH (EN 10028/3a) Painted carbon steel ASTM A516 Gr.70 Stainless steel AISI 304L Stainless steel AISI 316L	<b>PLATES</b>	Stainless steel AISI 304 Stainless steel AISI 316L Titanium Alloy SMO 254
	<b>GASKETS</b>	NBR EPDM FKM	<b>CLAMPING BOLTS</b>	Galvanized steel ASTM A193 B7 Stainless steel ASTM A193 B8 Stainless steel ASTM A193 B8M

## DIMENSIONS



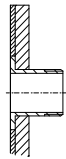
Are available the support legs too

NOMINAL PRESSURE	PN10	PN16
A (mm)	204	214
B (mm)		86
C (mm)		490
D (mm)		381
G (mm)	DN32 (1 1/4")	
Plate surface (m <sup>2</sup> )	0,048	
Vol. of channel (l)	0,102	
Weight of plate (Kg)	0,29	
Plate thickness (mm)	0,5	
Weight of frame (Kg)	25	31
Clamping bolts	N°8 M12	N°8 M16
E (mm)	116 (max 21 plates)	191 (max 39 plates)
	191 (max 39 plates)	291 (max 61 plates)

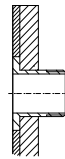
**Note:** the above quantities can be considered an expanability of 20% for each length. The max quantity of plates for this exchanger is 75

The plate heat exchangers are made according to the PED 2014/68/UE

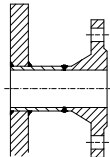
## CONNECTION TYPE



Threaded stainless steel G11/4"

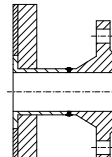


Threaded Polypropylene or PTFE G11/4"



Flange DN32 (Carbon steel)

Also available ANSI



Flange DN32 (Stainless steel)

Also available ANSI

