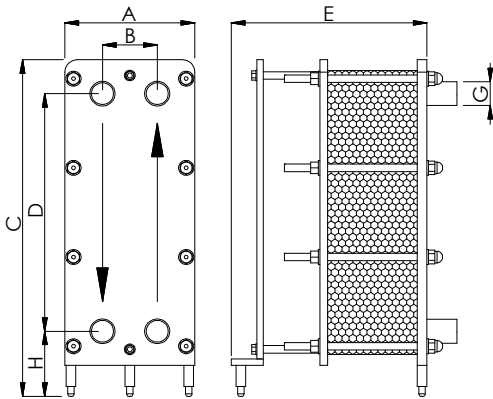


# TSC511

<b>APPLICATIONS</b>	Food, pharmaceutical and chemical sectors
<b>MAX. FLOW RATE</b>	15 m <sup>3</sup> /h (with water)
<b>FRAME</b>	PN6, PN10 (on request also PN16)

<b>MATERIALS</b>	<b>FRAME</b>	Stainless steel AISI 304L Stainless steel AISI 316L	<b>PLATES</b>	Stainless steel AISI 304 Stainless steel AISI 316L Titanium Alloy SMO 254
	<b>GASKETS</b>	NBR EPDM FKM		<b>CLAMPING BOLTS</b>

## DIMENSIONS

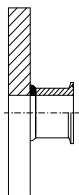


NOMINAL PRESSURE	PN6	PN10
A (mm)	204	210
B (mm)		86
C (mm)		540
D (mm)		381
H (mm)		104,5
G (mm)		DN32 (1 1/4")
Plate surface (m <sup>2</sup> )		0,048
Vol. of channel (l)		0,102
Weight of plate (Kg)		0,29
Plate thickness (mm)		0,5
Weight of frame (Kg)	27	35
Clamping bolts	N°8 M12	N°8 M14
E (mm)	265 (max 13 plates) 315 (max 25 plates) 365 (max 37 plates) 415 (max 49 plates) 565 (max 85 plates)	

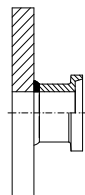
The plate heat exchangers are made according to the **PED 2014/68/UE**

**Note:** the above quantities can be considered an expanability of 20% for each length. The max quantity of plates for this exchanger is **101**

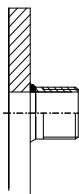
## CONNECTION TYPE



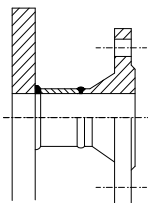
Clamp Stainless steel DN32



DIN 11851 Stainless steel DN32



Threaded Stainless steel G1 1/4"



Flange DN32

Disponibile anche **ANSI**