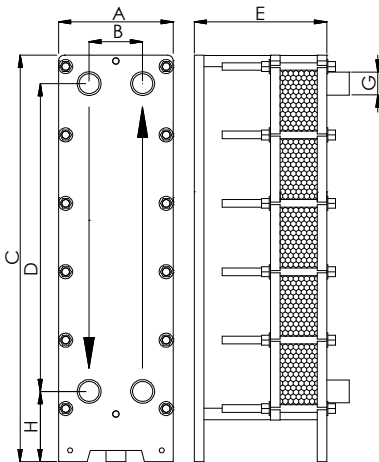


APPLICATIONS	Heating, Cooling, Steam applications
MAX. FLOW RATE	15 m ³ /h (with water)
FRAME	PN10, PN16

TSC910

MATERIALS	FRAME	Painted carbon steel P355NH (EN 10028/3a) Painted carbon steel ASTM A516 Gr.70 Stainless steel AISI 304L Stainless steel AISI 316L	PLATES	Stainless steel AISI 304 Stainless steel AISI 316L Titanium Alloy SMO 254
	GASKETS	NBR EPDM FKM	CLAMPING BOLTS	Galvanized steel ASTM A193 B7 Stainless steel ASTM A193 B8 Stainless steel ASTM A193 B8M

DIMENSIONI E INGOMBRI

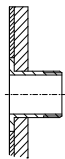


NOMINAL PRESSURE	PN10	PN16
A (mm)	204	218
B (mm)		86
C (mm)		840
D (mm)		657
H (mm)		128,5
G (mm)	DN32 (1 1/4")	
Plate surface (m ²)	0,091	
Vol. of channel (l)	0,168	
Weight of plate (Kg)	0,49	
Plate thickness (mm)	0,5	
Weight of frame (Kg)	42	60
Clamping bolts	N°12 M12	N°12 M16
E (mm)	284 (max 25 plates) 384 (max 49 plates) 534 (max 85 plates) 734 (max 131 plates)	

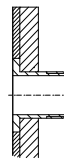
Note: the above quantities can be considered an expanability of 20% for each length. The max quantity of plates for this exchanger is 159

The plate heat exchangers are made according to the PED 2014/68/UE

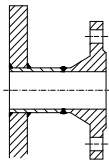
CONNECTION TYPE



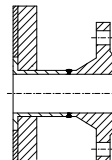
Threaded stainless steel G11/4"



Threaded Polypropilene or PTFE G11/4"



Flange DN32 (Carbon steel)



Flange DN32 (Stainless steel)

Also available ANSI

Also available ANSI

