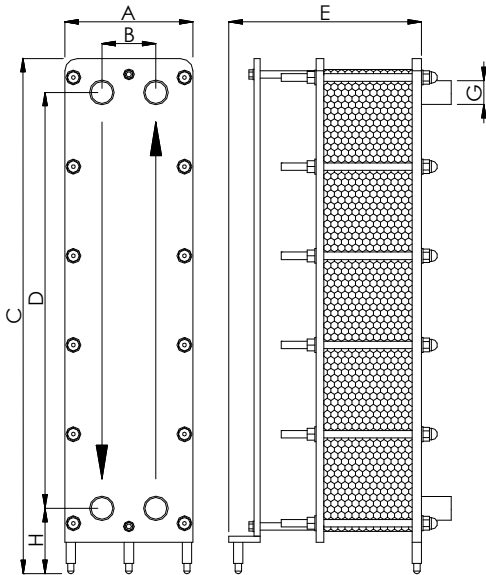


TSC911

APPLICATIONS	Food, pharmaceutical and chemical sectors
MAX. FLOW RATE	15 m ³ /h (with water)
FRAME	PN6, PN10 (on request also PN16)

MATERIALS	FRAME	Stainless steel AISI 304L Stainless steel AISI 316L	PLATES	Stainless steel AISI 304 Stainless steel AISI 316L Titanium Alloy SMO 254
	GASKETS	NBR EPDM FKM		CLAMPING BOLTS

DIMENSIONS

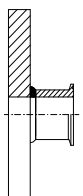


NOMINAL PRESSURE	PN6	PN10
A (mm)	204	210
B (mm)		86
C (mm)		816
D (mm)		657
H (mm)		104,5
G (mm)		DN32 (1 1/4")
Plate surface (m ²)		0,091
Vol. of channel (l)		0,168
Weight of plate (Kg)		0,49
Plate thickness (mm)		0,5
Weight of frame (Kg)	50	60
Clamping bolts	N°12 M12	N°12 M14
E (mm)	265 (max 13 plates) 315 (max 25 plates) 365 (max 37 plates) 415 (max 49 plates) 565 (max 85 plates) 765 (max 131 plates)	

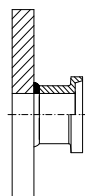
Note: the above quantities can be considered an expanability of 20% for each length. The max quantity of plates for this exchanger is **159**

The plate heat exchangers are made according to the **PED 2014/68/UE**

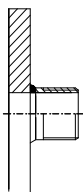
CONNECTION TYPE



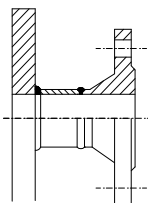
Clamp Stainless steel DN32



DIN 11851 Stainless steel DN32



Threaded Stainless steel G1 1/4"



Flange DN32

Disponibile anche **ANSI**